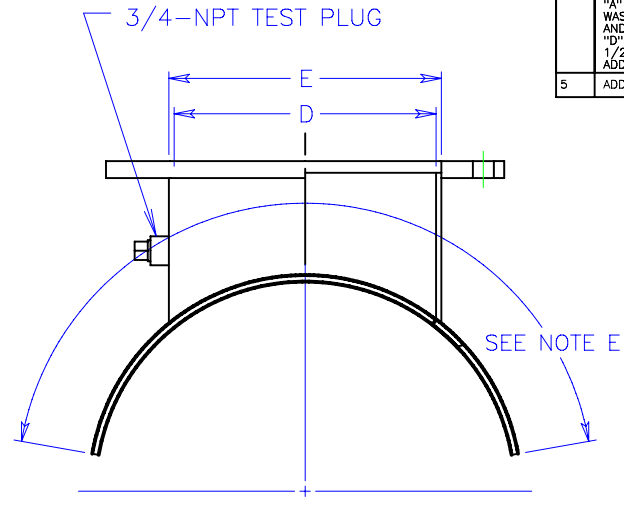
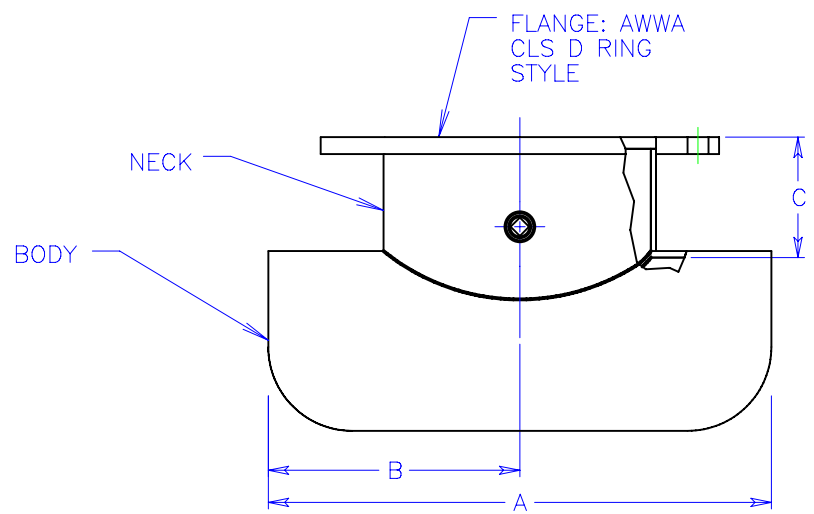


REVISIONS			
REV	DESCRIPTION	DATE	APPROVED
1	ADDED NOTE E AND "MIN PIPE DIA" COL.	6/14/93	DH EATON
2	ADDED SIZE ON SIZE NOTE.	8/4/93	DH EATON
3	"B" DIM FOR 4" SIZE WAS 6.0	12/20/93	DH EATON
4	ADDED NOTE F "A" DIM'S CHANGED: 12" WAS 20.0, 16" WAS 28.0, 20" WAS 32.0, 24" WAS 36.0 AND 36" WAS 48.0 "D" DIM'S FOR FLG SIZES 10" - 24" WERE 1/2" OVER FLG SIZE. ADDED 18" SIZE.	7/26/07	SAM HILL
5	ADDED NOTE G	11/06/07	SAM HILL



FLG SIZE	DIMENSIONS					MIN PIPE DIA.
	A	B	C	D*	E*	
4"	9.0	4.5	5.18	4.73	5.03	6.00
6"	12.0	6.0	5.18	6.73	7.03	8.00
8"	16.0	8.0	5.18	8.73	9.03	10.00
10"	20.0	10.0	5.50	10.73	11.03	12.00
12"	22.0	11.0	5.75	12.73	13.03	14.00
14"	24.0	12.0	6.00	14.73	15.03	16.00
16"	29.0	14.5	6.00	16.73	17.03	20.00
18"	32.0	16.0	6.00	18.73	19.03	22.00
20"	35.0	17.5	6.00	20.73	21.03	24.00
24"	42.0	21.0	6.00	24.73	25.03	36.00
36"	62.0	31.0	6.00	36.25	37.03	42.00

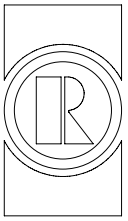
1

- NOTE:
- A. ALL MATERIAL ASTM A36 OR EQUAL.
 - B. COATING PER CUSTOMER ORDER.
 - C. MAX WORKING PRESSURE 175 PSI FOR FLANGE SIZES 12" AND SMALLER; 150 PSI FOR 14" AND LARGER.
 - D. DIMENSIONS SHOWN ARE SUITABLE FOR THE FOLLOWING CONDITIONS:
 - 1. PIPE WALL: 0.25.
 - 2. PIPE YIELD STRENGTH: 36,000 PSI.
 - 3. TEMPERATURE LESS THAN 150° F.
 WHERE OTHER CONDITIONS APPLY, CONSULT YOUR REPRESENTATIVE.
 - E. BODY EDGE WIDTH IN CIRCUMFERENTIAL DIRECTION WILL BE EQUAL TO DIMENSION A SAVE FOR SIZE ON SIZE TAPPING SLEEVES. BACK HALVES AVAILABLE ON REQUEST.
 - F. A AND B DIMENSIONS MAY VARY WITH SLEEVE SIZE.
 - G. SIZE ON SIZE SLEEVES ARE PROVIDED WITH A BACK HALF TO COMPLETE A FULL 360 DEGREE WRAP PER CONDITIONS IN NOTE D.

2

*FLANGE DIMENSIONS MUST BE VERIFIED BY CUSTOMER FOR FLANGE SIZES LARGER THAN 12".
FOR SMALLER DIAMETERS, CONSULT YOUR REPRESENTATIVE.

THIS DRAWING CONTAINS CONFIDENTIAL PROPRIETARY INFORMATION AND IS THE PROPERTY OF ROMAC IND INC. IT IS TO BE USED ONLY FOR THE PURPOSE FOR WHICH IT IS SUBMITTED AND SHALL NOT HAVE IT'S INFORMATION DISCLOSED OR REPRODUCED IN WHOLE OR IN PART FOR ANY PURPOSE WITHOUT PRIOR WRITTEN PERMISSION OF ROMAC IND INC.

UNLESS OTHERWISE SPECIFIED	SIGNATURES	DATE		ROMAC IND. INC., SEATTLE WA	
DIMENSIONS ARE IN INCHES TOLERANCES ARE ON: 2 PL DECIMALS +/- 3 PL DECIMALS +/- ANGLES +/- FRACTIONS +/-	DRWN DH EATON	5/24/93		TITLE	FTS445 WELD-ON TAPPING SLEEVES
	CHECKED				
	ENGRG				
	ISSUED				
			SIZE A	DWG. NO. B0945-A	REV. NO. 5
			SCALE NTS	SHEET 1 OF 1	